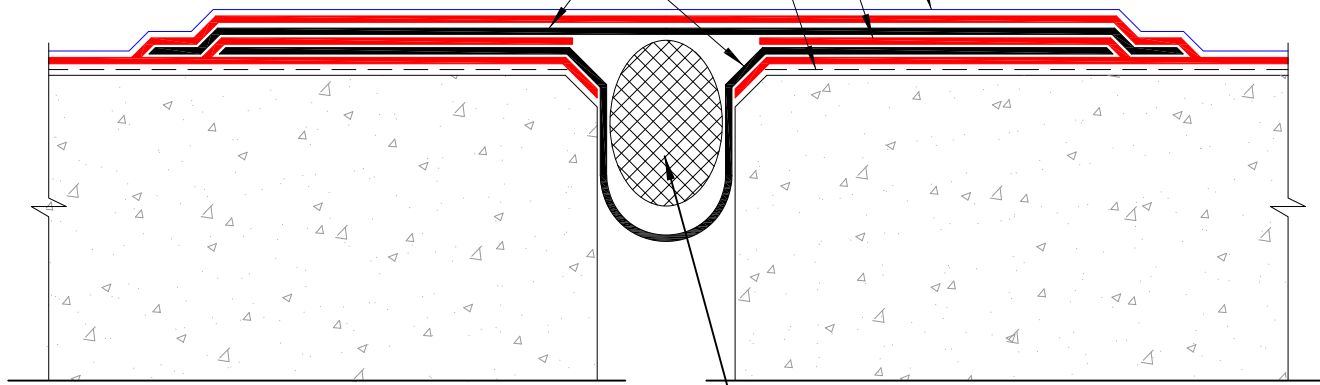


Hydro-Tuff CS-100 (Protection Sheet)

Hydro-Tuff HFA, 215 mils
(Reinforced Membrane)

Hydro-Primer (Primer)

Neoprene Flashing set in HFA
(Uncured Neoprene)



Foam Rod or Tube



DETAIL NAME:
**1"-2" MAX JOINT
(Slab to Slab)**

JOB NAME:

Scale:
NTS

Date:
01-10-17

Drawing #:
CT-003